

Company: Beach Petroleum

Well: Spikey Beach-1

Field:

Rig Name: Ocean Patriot

State: VIC

Country: Australia

Latitude: 40° 28' 53.9" S

Longitude: 145° 52' 24.63" E

Block: UWID: Rig Name: Ocean Patriot
Rig Type: Semi Sub

FL: Bass Stait

FL1:

FL2:

Log Measured From - Drill Floor: 21.5 m

Permanent Datum - Mean Sea Level

Ground Level: 75.0 m

Acquisition Dates:

Other Services:

Print Interval: 18.7(m) to 484.0(m)

OS1

Index Types: Measured Depth

Index Scales: 1:500

Depth Source: Driller's Depth

Depth Sensor:

Conveyance: Drill Pipe

Print Type: Field

Spud Date: 07/09/09

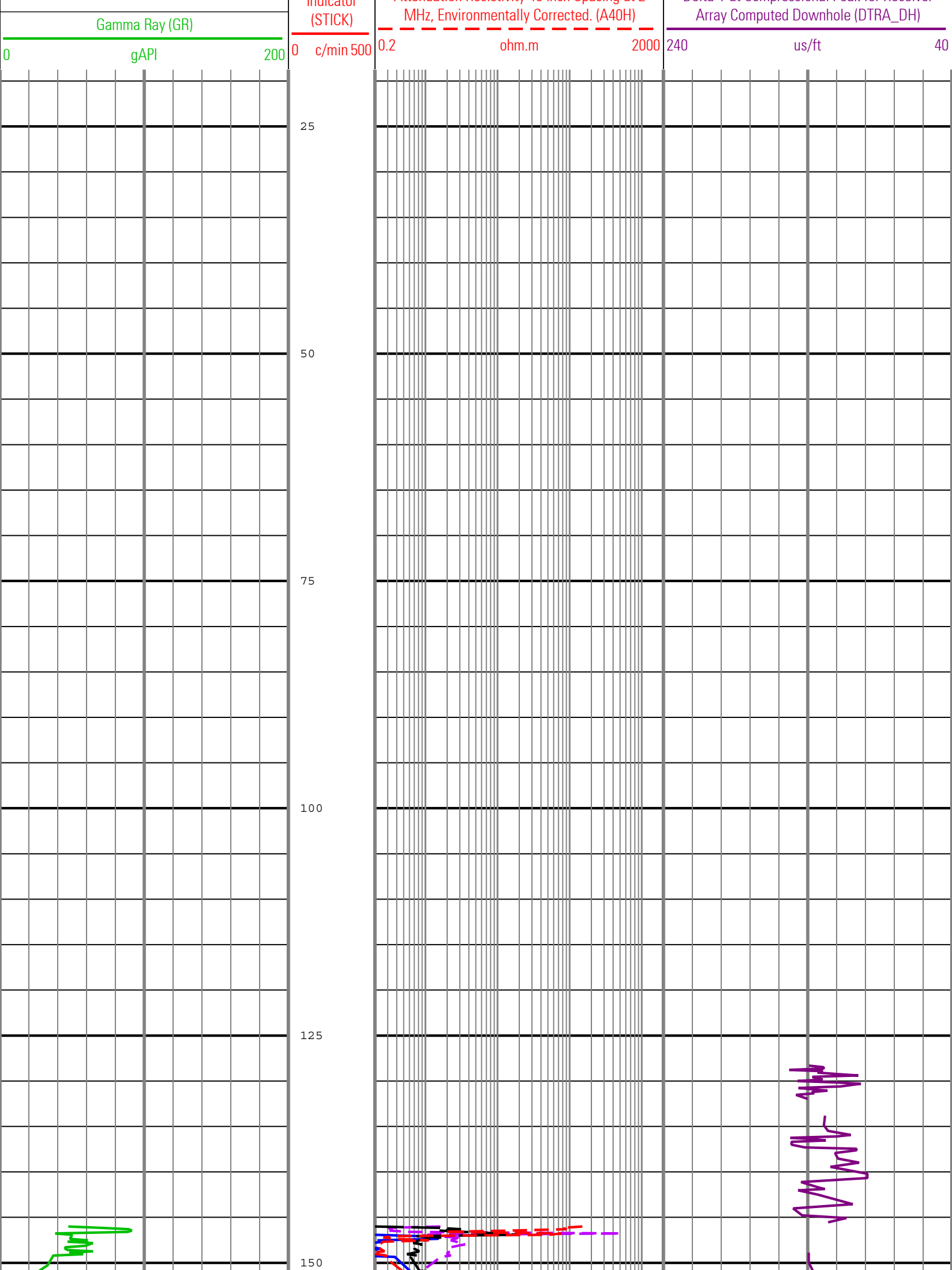
Disclaimer

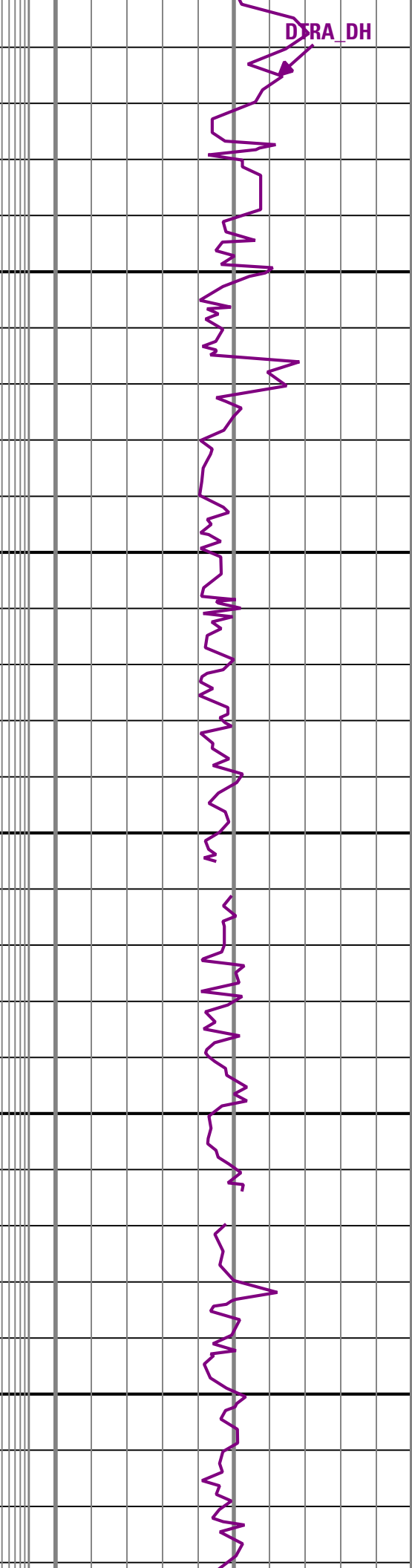
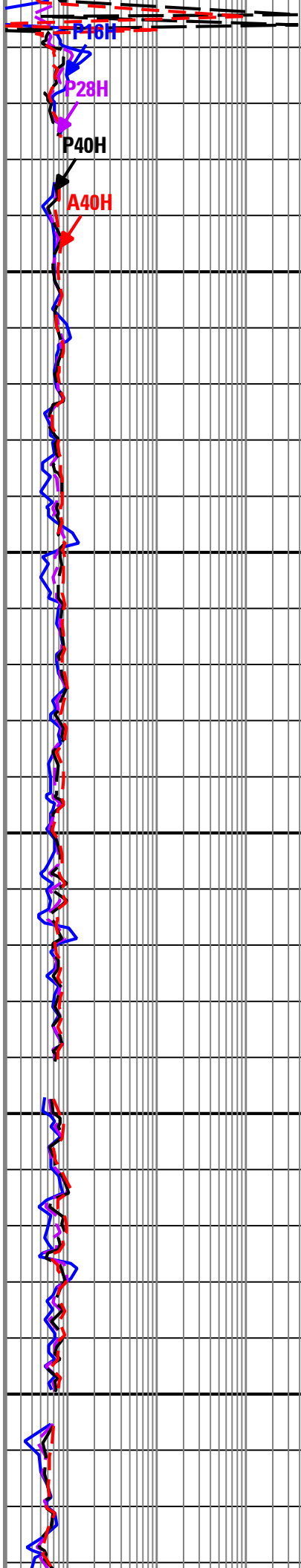
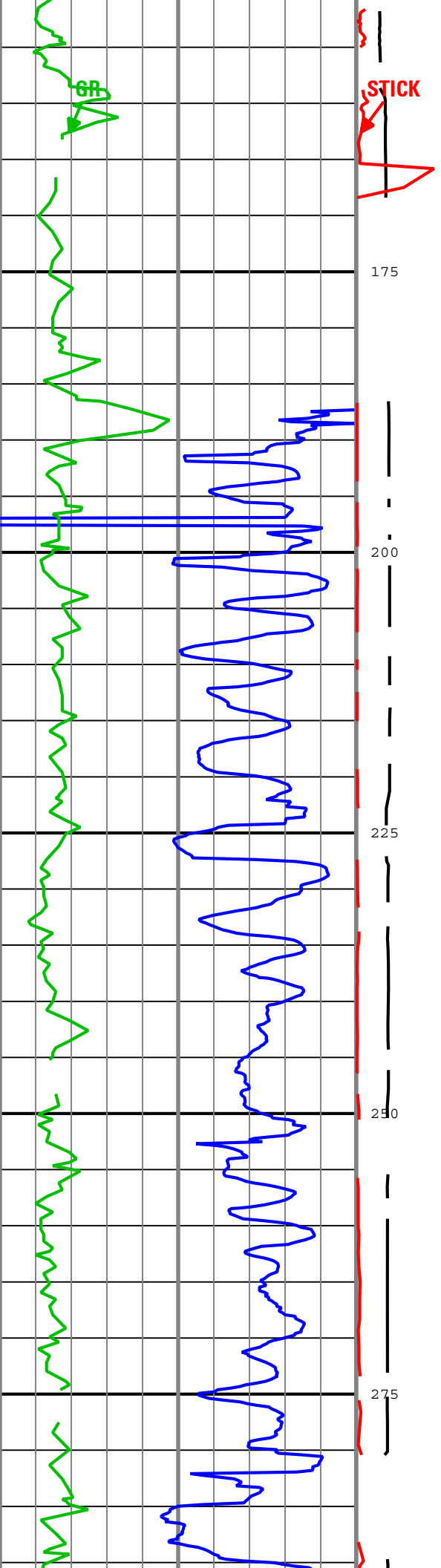
THE USE OF AND RELIANCE UPON THIS RECORDED-DATA BY THE HEREIN NAMED COMPANY (AND ANY OF ITS AFFILIATES, PARTNERS, REPRESENTATIVES, AGENTS, CONSULTANTS AND EMPLOYEES) IS SUBJECT TO THE TERMS AND CONDITIONS AGREED UPON BETWEEN SCHLUMBERGER AND THE COMPANY, INCLUDING: (a) RESTRICTIONS ON USE OF THE RECORDED-DATA; (b) DISCLAIMERS AND WAIVERS OF WARRANTIES AND REPRESENTATIONS REGARDING COMPANY'S USE AND RELIANCE UPON THE RECORDED-DATA; AND (c) CUSTOMER'S FULL AND SOLE RESPONSIBILITY FOR ANY INFERENCE DRAWN OR DECISION MADE IN CONNECTION WITH THE USE OF THIS RECORDED-DATA.

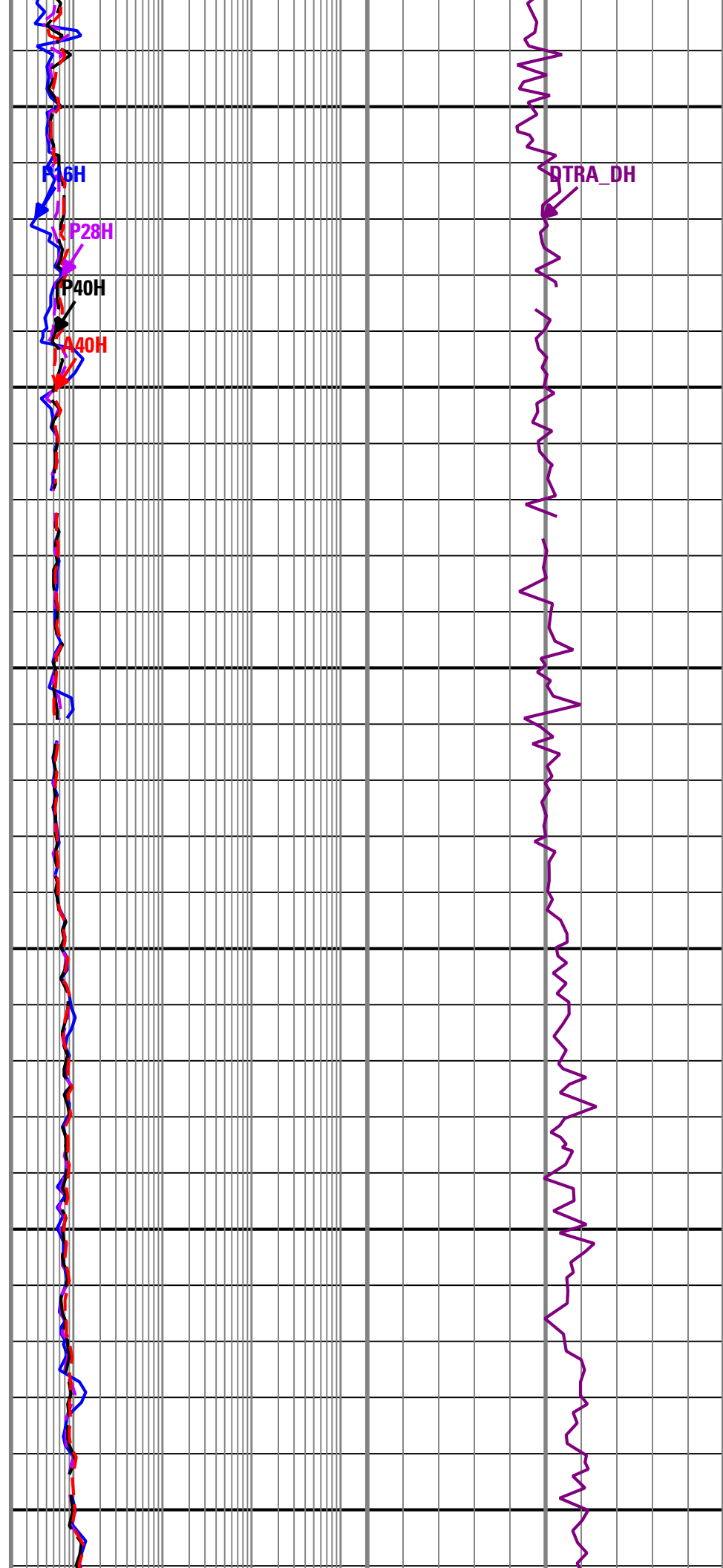
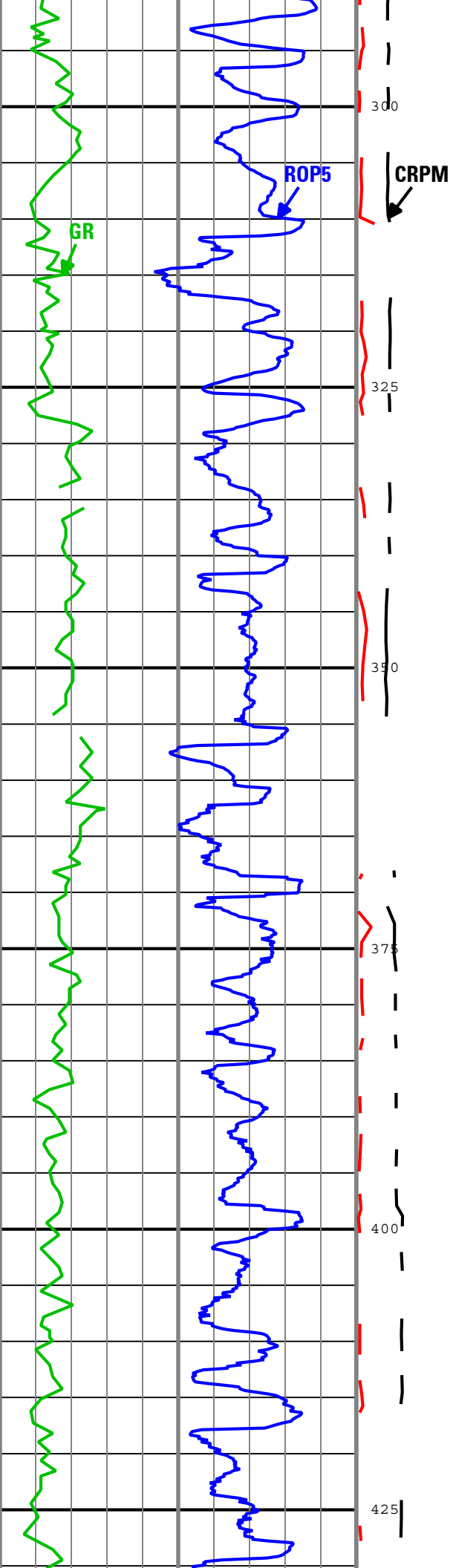
Contents

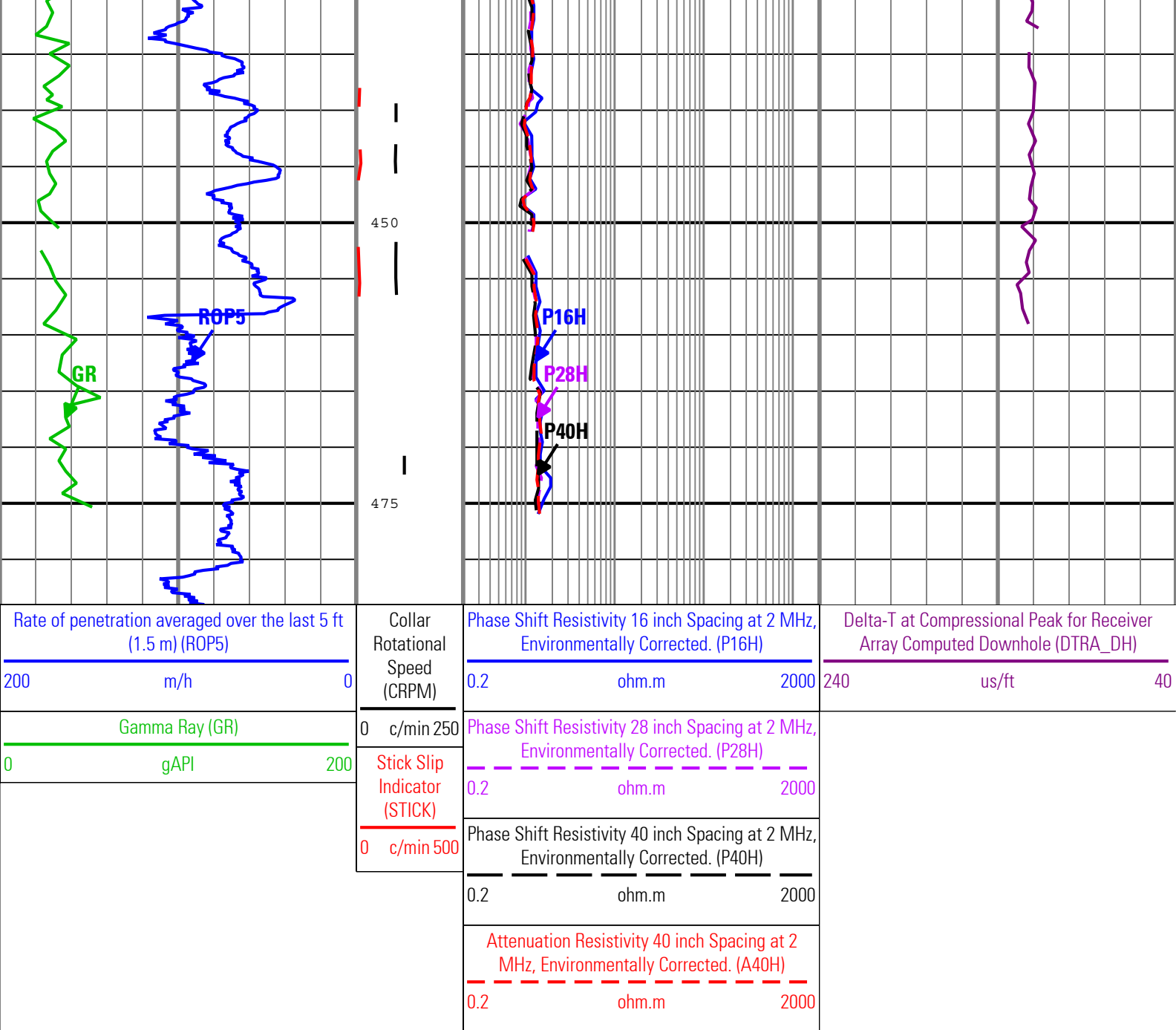
- 1. Header
- 2. Disclaimer
- 3. Contents
- 4. Run 1
 - 4.1 Software Version
 - 4.2 Pass Summary
 - 4.3 Log (Spikey Beach-1 RT ARC+Sonic)
 - 4.4 Parameter Listing
- 5. Tail

Run 1									
Software Version									
Acquisition System						Version			
MaxWell						1.2.8706.0			
Framework Patch						FWK-BGC-20090709-1.2.8706.1016			
Application Patch						APL-BGC-DnM-1.2.8706.1021			
Computation		Description					Version		
ARC9GammaRayComputation		ARC9 Gamma Ray Computation Package for both Real-time and Recorded Mode					1.2.8706.1021		
ARCResistivity		ARC Resistivity Computation Package for ARC Tool Family					1.2.8706.1021		
Tool Elements		Description			Software Version		Firmware Version		
ARDC		ARC 9.00 Inch Tool Drilling Collar			1.2.8706.1021				
DRILLING_SURFACE		DRILLING_SURFACE			1.2.8706.1016				
Pass Summary									
Run Name	Pass Objective	Direction	Top	Bottom	Acquisition Start Date		Acquisition Start Time		
Run 1	Drilling	Down	42.14 m		07-Sep-2009		20:16:27		
All depths are referenced to toolstring zero									
Log	Run 1: Drilling C1568A4D-04B5-4616-905C-87373D9CABB6								
Description: ARC + sonicVISION Format: Log (Spikey Beach-1 RT ARC+Sonic) Index Scale: 1:500 Index Unit: m Index Type: Measured Depth Creation Date: 08-Sep-2009 06:43:17									
A40H	ARC9:ARC9:ARDC		6in - RT						
CRPM	TELE900:TELE900		6in - RT						
DTRA_DH	SONICVISION9:SONICVISION9		6in - RT						
GR	ARC9:ARC9:ARDC		6in - RT						
P16H	ARC9:ARC9:ARDC		6in - RT						
P28H	ARC9:ARC9:ARDC		6in - RT						
P40H	ARC9:ARC9:ARDC		6in - RT						
ROP5	DRILLING_SURFACE		6in - RT						
STICK	TELE900:TELE900		6in - RT						
Rate of penetration averaged over the last 5 ft (1.5 m) (ROP5)			Collar Rotational Speed (CRPM)	Phase Shift Resistivity 16 inch Spacing at 2 MHz, Environmentally Corrected. (P16H)			Delta-T at Compressional Peak for Receiver		
				0.2 ohm.m 2000					
				Phase Shift Resistivity 28 inch Spacing at 2 MHz, Environmentally Corrected. (P28H)					
				0.2 ohm.m 2000					
0 c/min 250			Stick Slip Indicator	Phase Shift Resistivity 40 inch Spacing at 2 MHz, Environmentally Corrected. (P40H)					
0.2 ohm.m 2000				Attenuation Resistivity 40 inch Spacing at 2					
200 m/h	0								









Description: ARC + sonicVISION Format: Log (Spikey Beach-1 RT ARC+Sonic) Index Scale: 1:500 Index Unit: m Index Type: Measured Depth Creation Date: 08-Sep-2009 06:43:17


Channel Processing Parameters				
Parameter	Description	ToolPath	Value	Unit
BHK	Drilling Fluid Potassium Concentration	Borehole	0	%
BHT	Bottom Hole Temperature	Borehole	100	degC
BS	Bit Size	COMPLETION	Depth Zoned	in
DFD	Drilling Fluid Density	Borehole	10	lbm/gal
DFT	Drilling Fluid Type	Borehole	Water	
GGRD	Geothermal Gradient	Borehole	18.23	degC/km
GRSE	Generalized Mud Resistivity Selection	Borehole	Computed (GEN-9)	
GTSE	Generalized Temperature Selection	Borehole	Gradient From Surface	
MST	Mud Sample Temperature	Borehole	20	degC
RMS	Resistivity of Mud Sample	Borehole	0.2	ohm.m
SHT	Surface Hole Temperature	Borehole	20	degC

Depth Zone Parameters			
Parameter	Value	Start (m)	Stop (m)

BS	36	18.75	150
BS	17.5	150	

All depth are actual.

Tool Control Parameters				
Parameter	Description	ToolPath	Value	Unit
OFFBTM_TH	Threshold for deciding whether the bit is off bottom	DnMWorkflow	0.6	m

Company:	Beach Petroleum	
Well:	Spikey Beach-1	
Field:		
Rig Name:	Ocean Patriot	
State:	VIC	
Country:	Australia	

Spikey Beach-1 LWD VISION RT 500MD

Schlumberger